

MACRO-INVERTEBRATEN

Tolerantie- Klasse	Totaal S.E.	0-1	2-5	6-10	11-15	16 +
	BIOTISCHE INDEX					
TK1	> 1 S.E.		7	8	9	10
	1 S.E.	5	6	7	8	9
TK2	> 1 S.E.		6	7	8	9
	1 S.E.	5	5	6	7	8
TK3	> 2 S.E.		5	6	7	8
	2-1 S.E.	3	4	5	6	7
TK4	↑ S.E.					
		3	4	5	6	7
TK5	↑ S.E.					
		2	3	4	5	
TK6	↑ S.E.					
		1	2	3		
TK7	↑ S.E.					
		0	1	1		



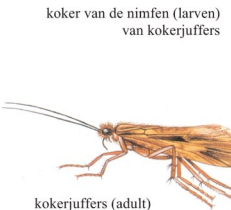
larven van de vlakke eendagsvliegen *Ecdyomuridae*



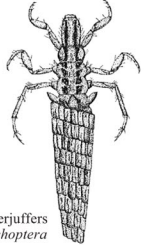
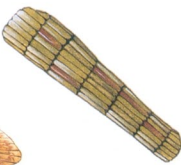
larven van de steenvliegen *Plecoptera*



steenvliegen (adult)



koker van de nimfen (larven) van kokerjuffers



larven van kokerjuffers *Trichoptera*

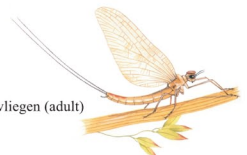
kokerjuffers (adult)



Nimfen (larven van eendagsvliegen (haften)) *Ephemeroptera*



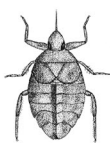
mutsslakken *Ancylidae*



eendagsvliegen (adult)



zoetwatervlokreeften *Gammaridae*



slakken *Mollusca - weekdieren*



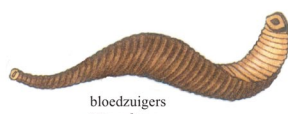
Nimfen (larven van de echte libellen en juffers *Odonata*)



libellen en juffers (adult)



wantsen *Hemiptera*



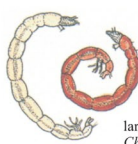
bloedzuigers *Hirundinea*



erwtmosselen *Sphaeriidae*



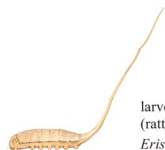
zoetwaterpissebedden *Asellus*



larven van vedermuggen *Chironomidae thummi-plumosus*



borstelwormen *Tubificidae*



larven van zweefvliegen (rattenstaartlarven) *Eristalinae*